

BONNETTS

Energy Corp

Delivery. Well Ahead.™

BOREAL

E-line

Central Dispatch 1.888.843.3833

Boreal Conventional E-Line & Specialty Services



Boreal E- line Conventional offers a full array of Cased Hole logging, perforating & abandonment services. Combined with our expert personnel, commitment to safety & quality service, we are the best choice to handle all your completion, production & abandonment requirements.

Our head office is strategically located in Grande Prairie, AB with full-service field bases in Red Deer, AB & Ft. St. John BC.

Perforating and Mechanical Services (Sweet & Sour Service)

- WL Conveyed Perforating (all gun configurations & charge selections) / TCP / Mechanical BP-WR setting / Plug & Perf / Gauge Ring Junk Basket / Dump Bailing / Swabbing / Pipe Recovery / Jet Cutting / Kinley Cutter



Pressure Control Equipment (PCE)

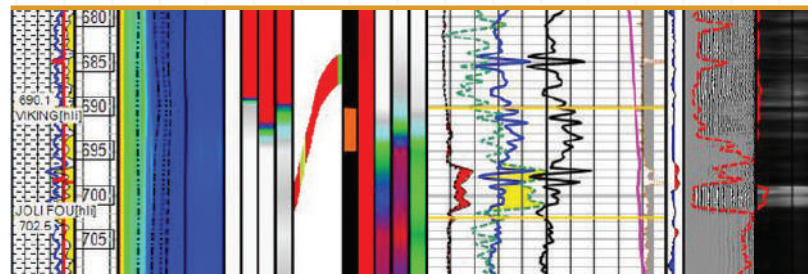
- Standard Packoff / Grease Injection up to 15K PSI/103 mPa / WL BOP Manual & Hydraulic Remote / N2 Purging & Pressure Testing

Standard Logging Services

- Radial Bond log / TEMP Log / CNL / GR / CCL / Cement Plug Log

Surface Casing Vent Flow & Gas Migration Logging

- Hifi Fiber Optic Directional Noise Log (MiCro Tool) / Standard Noise Log / CHAT / Detailed analysis & reporting



CORPORATE HEAD OFFICE: 65007 43 HWY, GRANDE PRAIRIE, AB T8W 5E7 T 780.513.3400 F 780.532.9266

CALGARY SALES OFFICE: SUITE 3300 605 – 5TH AVE SW T2P 3H5 T 403.264.3010 F 403.693.0093

BONNETTS
Well-Intel

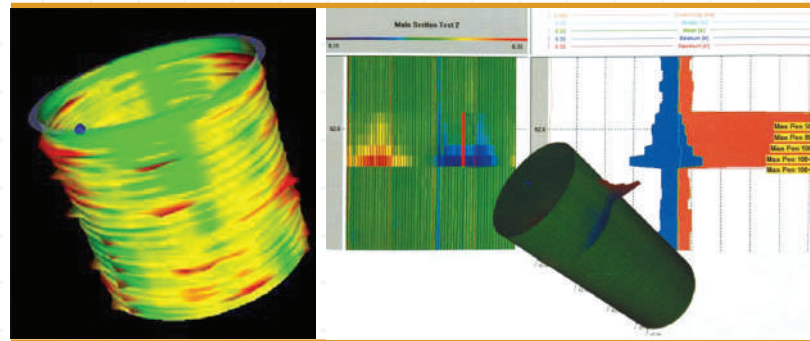
REDNECKZ
Wireline

BOREAL
Pumping

SILVERLINE
Swabbing

BONNETTS
Wireline

BOREAL
E-line



Casing Inspection / Integrity Logging

- ✔ GoWell Magnetic Thickness Tool (MTD) – Simultaneously Evaluates Multiple Strings of Casing from 43 mm to 473.1 mm casing sizes in ONE run , 56 Arm Multi Finger Caliper (MFC) complete with 3D Modeling & Government Regulator Reporting
- ✔ GE/Sondex Magnetic Thickness Tool (MTT), Multifinger Imaging Tool (MIT), 24, 40 & 60 Arm Multifinger Imaging Tools, complete with 3D Modeling & Government Regulator Reporting

Production Logging

- ✔ Production Logs are used to evaluate fluid movement in & out of wellbore, quantify flow rates & determine fluid properties, perforation efficiencies throughout the life of a well
- ✔ Tools include: GR / CCL / TEMP / PRESSURE / CAPACITANCE / GRADIO / SPINNER (inline & fullbore)

Geo-Science – Processing, Analysis & Reporting

- ✔ Log Processing, AER Submissions
- ✔ Detailed interpretation summaries for:
 - Temp Injection Surveys
 - Casing Inspection Logging
 - GoWell - MTD/MFC
 - Sondex – MTT-MIT
 - SCVF/GM Logging Services
 - MiCro / NT / CHAT / RBT
 - Production Logging Services

Regulatory Compliance

- ✔ Directive 20 – Well Abandonments
- ✔ Directive 51 – Injection and Disposal Well
- ✔ Directive 80 – Well Logging
- ✔ Directive 83 – Hydraulic Fracturing

Equipment

- ✔ Sweet E-line units (Grande Prairie, Red Deer, Ft. St. John)
- ✔ Sour service E-line units (Grande Prairie, Red Deer, Ft. St. John)
- ✔ Fiber Optic units (Grande Prairie, Red Deer)
- ✔ MAST E-line units (Grande Prairie, Red Deer)
- ✔ 1 Heli-Portable E-line Skid Unit c/w Derrick & Power Plant (Red Deer)
- ✔ Trailer Mounted MAST Unit (Red Deer)

CORPORATE HEAD OFFICE: 65007 43 HWY, GRANDE PRAIRIE, AB T8W 5E7 T 780.513.3400 F 780.532.9266

CALGARY SALES OFFICE: SUITE 3300 605 – 5TH AVE SW T2P 3H5 T 403.264.3010 F 403.693.0093